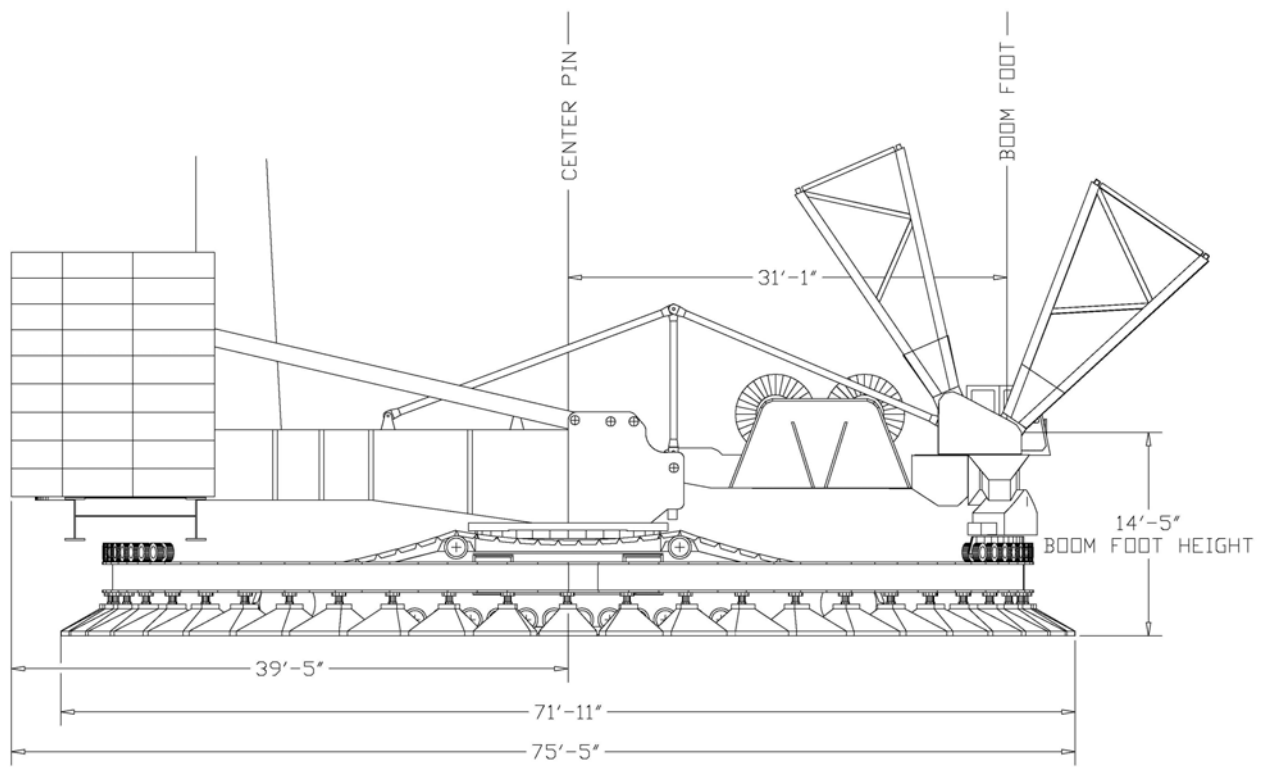


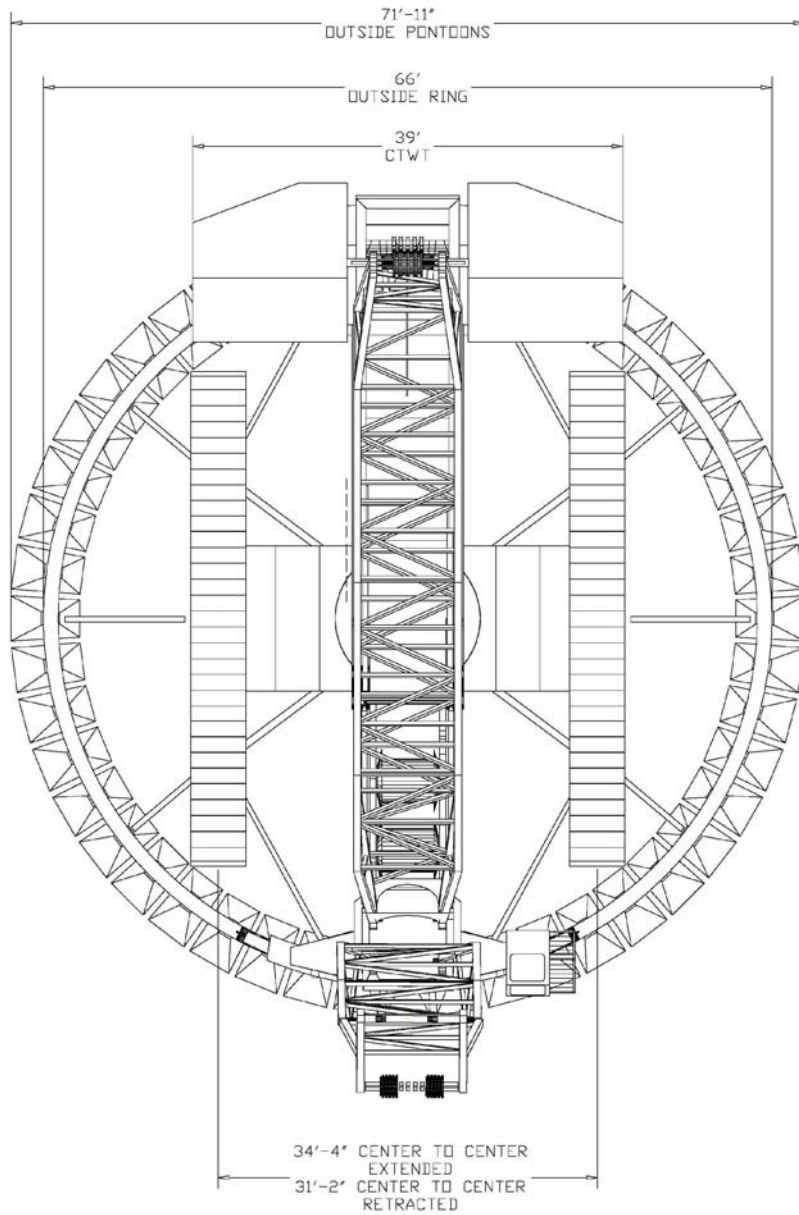
Demag CC4000RL

1,760T



Demag CC4000RL

1,760T



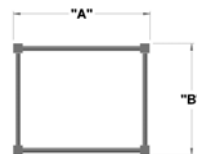
Demag CC4000RL

1,760T

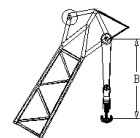
Component Weights	
Weight of counterweighted Machine with 59' (12m) boom	996,500 lbs
Superstructure only (with 4 drums, boom foot section and mast)	171,519 lbs
Carbody	113,538 lbs
Side frame (x two)	159,394 lbs
Ring Assembly	80,000 lbs
Basic Counterweight	309,000 lbs
Superlift Counterweight	1,760,000 lbs

Cables		
	Line Pull	Diameter
Main Hoist	35,000 lbs	30 mm
Aux Hoist	35,000 lbs	30 mm

Boom		
	"A"	"B"
Main	13'-0"	10'-0"
Luffer	7'-6"	7'-10"
Mast	7'-6"	7'-10"



Hook-Block			
Capacity	Number of Sheaves	Weight	"B"
550T	2 x 11	20,800 lbs	15'
330T	14	11,243 lbs	11'
122T	6	4,938 lbs	8'



Symbols & Notes



Crawler Crane



Truck Crane



Ring Mounted Crane



Main Counterweight



Main Boom



Main Boom with Luffing Jib



Tower Configuration



Superlift Attachment with Tray

General Use Notes

1. Capacity charts represent capacities for normal use. Additional load cases, special configurations and engineered lifts are available. Consult Barnhart engineering.
2. All cranes have wind speed restrictions available in the operating manual.
3. Capacities assume level and suitable ground conditions
4. Load block, rigging and other lifting devices are considered part of the lifted load.
5. Some long boom configurations require an assist crane for erection. Consult Barnhart.

Demag CC4000RL



1,760 kips



		Lift Capacity (Tons)													
		Main Boom (ft)													
Lift Radius (ft)	118' ¹	138' ¹	157'	177'	197'	216'	236'	256'	276'	295'	315'	335'	354'	374' ²	394' ²
51'	1,760	1,430	1,100	990	-	-	-	-	-	-	-	-	-	-	-
59'	1,320	1,210	1,100	979	858	759	660	-	-	-	-	-	-	-	-
66'	1,100	1,078	1,078	957	858	759	660	594	528	495	462	396	-	-	-
82'	737	814	880	869	858	759	660	594	528	495	462	396	330	297	264
98'	528	583	627	660	660	759	660	594	528	495	462	396	330	297	264
115'	396	451	501	526	525	524	521	520	495	473	448	391	330	297	264
131'	297	341	396	425	433	431	429	428	426	422	410	385	330	297	264
148'	-	286	316	345	362	365	362	361	359	355	351	345	308	294	264
164'	-	-	253	283	301	315	312	310	308	304	299	295	281	272	264
180'	-	-	-	231	253	267	273	271	268	264	260	255	253	251	244
197'	-	-	-	-	210	278	237	239	237	232	228	223	220	218	216
213'	-	-	-	-	-	191	204	209	210	206	201	198	196	193	187
230'	-	-	-	-	-	-	173	182	186	184	179	176	173	169	165
246'	-	-	-	-	-	-	-	156	163	165	161	157	154	150	145
262'	-	-	-	-	-	-	-	-	141	145	143	141	139	136	133
279'	-	-	-	-	-	-	-	-	-	127	128	129	130	127	122
295'	-	-	-	-	-	-	-	-	-	-	113	117	119	116	113
312'	-	-	-	-	-	-	-	-	-	-	-	106	108	110	108
328'	-	-	-	-	-	-	-	-	-	-	-	-	97	99	101
344'	-	-	-	-	-	-	-	-	-	-	-	-	-	88	90
361'	-	-	-	-	-	-	-	-	-	-	-	-	-	-	77

Notes:

1. Limited availability of Type 805 boom. Consult Barnhart
2. Limited availability of additional inserts. Consult Barnhart

Demag CC4000RL



1,653 kips

805 Main Boom
705 Luffing Jib



1. indicates 2,205 K Ring Ctw.

Lift Radius (ft)	177' Main Boom									
	118' Jib				Fixed		157' Jib			
	Luffing				Fixed		Luffing			Fixed
	88°	80°	74°	74° ¹	13°	13° ¹	88°	80°	74°	13°
72	424.0	-	551.0	-	424.0	-	-	-	-	-
79	423.5	-	551.0	-	424.0	-	-	-	-	-
85	403.0	-	551.0	-	424.0	424.0	319.5	-	-	308.5
92	383.0	-	551.0	-	424.0	424.0	319.5	-	-	308.5
98	360.5	-	551.0	-	424.0	424.0	319.5	-	-	308.5
105	337.0	-	523.8	-	424.0	424.0	305.0	-	-	308.5
111	319.0	424.0	492.0	-	424.0	424.0	290.0	-	-	308.5
118	299.0	424.0	449.0	-	413.5	424.0	275.5	-	-	308.5
124	283.5	404.5	412.0	-	403.0	424.0	263.5	319.5	-	308.5
131	269.0	375.5	391.0	-	391.5	424.0	251.5	319.5	-	308.5
138	256.0	352.0	365.0	-	365.0	424.0	240.0	319.0	-	308.5
144	-	333.5	351.5	424.0	343.7	423.5	230.5	310.0	-	308.5
151	-	312.5	319.0	424.0	319.0	402.0	220.0	299.5	-	308.5
164	-	273.5	282.0	424.0	282.0	356.0	203.5	271.0	270.0	297.5
177	-	-	247.0	359.0	247.0	310.0	187.5	242.5	246.0	283.0
190	-	-	221.0	331.0	221.0	264.5	-	217.5	225.0	256.0
203	-	-	201.0	-	201.0	241.0	-	194.5	208.5	232.0
216	-	-	184.5	-	184.5	216.0	-	-	192.0	212.0
229	-	-	168.0	-	168.0	196.0	-	-	177.0	194.5
243	-	-	155.0	-	155.0	176.0	-	-	-	178.0
256	-	-	145.0	-	145.5	160.0	-	-	-	165.0
269	-	-	-	-	134.5	-	-	-	-	145.5
282	-	-	-	-	126.5	-	-	-	-	131.0
295	-	-	-	-	-	-	-	-	-	118.0
308	-	-	-	-	-	-	-	-	-	109.0
321	-	-	-	-	-	-	-	-	-	101.5
334	-	-	-	-	-	-	-	-	-	-
348	-	-	-	-	-	-	-	-	-	-
361	-	-	-	-	-	-	-	-	-	-

Demag CC4000RL



1,653 kips

805 Main Boom
705 Luffing Jib



Lift Radius (ft)	177' Main Boom						
	197' Jib				236' Jib		
	Luffing			Fixed	Luffing		Fixed
	88°	80°	74°	13°	88°	74°	13°
72	-	-	-	-	-	-	-
79	-	-	-	-	-	-	-
85	-	-	-	-	-	-	-
92	242.5	-	-	242.5	-	-	-
98	242.5	-	-	242.5	-	-	-
105	242.5	-	-	242.5	181.5	-	-
111	242.5	-	-	242.5	178.5	-	165.0
118	240.0	-	-	242.5	176.0	-	165.0
124	232.0	-	-	242.5	173.0	-	165.0
131	224.0	-	-	242.5	169.5	-	165.0
138	215.5	242.5	-	242.5	165.0	-	165.0
144	208.5	242.5	-	242.5	160.0	-	165.0
151	200.5	242.5	-	242.5	154.0	-	164.0
164	187.0	242.5	-	242.5	142.0	-	164.0
177	175.0	226.0	231.5	242.5	129.0	-	163.0
190	163.0	208.5	218.5	242.5	118.0	-	162.0
203	152.0	193.0	201.0	233.5	107.0	154.5	160.5
216	141.5	174.5	186.5	213.5	97.0	137.0	157.5
229	-	159.5	171.5	196.0	86.5	123.0	154.0
243	-	143.0	159.5	179.0	77.0	110.0	147.5
256	-	-	148.5	166.0	69.0	99.0	143.0
269	-	-	-	151.0	-	88.0	136.5
282	-	-	-	136.5	-	79.0	130.0
295	-	-	-	122.5	-	70.5	120.0
308	-	-	-	111.5	-	-	111.5
321	-	-	-	102.5	-	-	102.5
334	-	-	-	95.0	-	-	95.0
348	-	-	-	88.0	-	-	88.0
361	-	-	-	-	-	-	81.5

Demag CC4000RL



1,653 kips

805 Main Boom
705 Luffing Jib



Lift Radius (ft)	Lift Capacity					
	217' Main Boom					
	118' Jib			157' Jib		
	Luffing		Fixed	Luffing		Fixed
	88°	74°	13°	88°	74°	13°
72	352.5	-	-	-	-	-
79	346.0	-	-	-	-	-
85	326.0	-	-	273.5	-	-
91	302.5	-	319.5	264.0	-	248.0
98	282.5	-	319.5	254.0	-	248.0
105	266.5	-	319.5	240.0	-	248.0
111	254.5	-	319.5	228.0	-	248.0
118	237.0	-	319.5	215.0	-	248.0
124	222.0	-	319.5	206.0	-	248.0
131	205.5	-	316.0	195.0	-	248.0
138	193.5	-	312.5	184.5	-	248.0
144	-	-	308.5	175.5	-	-
151	-	-	304.0	166.0	-	247.5
164	-	264.5	295.0	152.0	-	244.5
177	-	226.0	264.5	140.0	220.5	242.5
190	-	204.0	236.5	-	198.5	231.5
203	-	-	212.0	-	177.0	215.0
216	-	-	191.5	-	159.0	194.5
229	-	-	173.5	-	144.0	176.0
243	-	-	156.0	-	-	159.5
256	-	-	143.0	-	-	145.0
269	-	-	131.0	-	-	133.0
282	-	-	120.0	-	-	122.0
295	-	-	110.0	-	-	112.5
308	-	-	101.5	-	-	103.5
321	-	-	-	-	-	95.0
334	-	-	-	-	-	88.5
348	-	-	-	-	-	-
361	-	-	-	-	-	-

Demag CC4000RL



1,653 kips

805 Main Boom
705 Luffing Jib



Lift Radius (ft)	Lift Capacity (Tons)								
	217' Main Boom				236' Jib				
	197' Jib		Fixed 13°	Luffing					Fixed 13°
	88°	74°		88°	82°	74°	66°		
72	-	-	-	-	-	-	-	-	
79	-	-	-	-	-	-	-	-	
85	-	-	-	-	-	-	-	-	
91	220.0	-	-	-	-	-	-	-	
98	215.0	-	-	-	-	-	-	-	
105	205.0	-	-	170.5	-	-	-	-	
111	196.5	-	187.0	165.5	-	-	-	-	
118	189.5	-	187.0	161.0	-	-	-	-	
124	183.5	-	187.0	157.5	-	-	-	143.0	
131	176.5	-	187.0	154.0	-	-	-	143.0	
138	170.5	-	187.0	149.5	-	-	-	143.0	
144	164.5	-	187.0	145.5	-	-	-	143.0	
151	157.5	-	186.0	141.0	158.5	-	-	143.0	
164	144.0	-	186.0	132.0	158.5	-	-	143.0	
177	131.0	-	185.0	123.5	156.5	-	-	143.0	
190	119.0	-	185.0	115.5	152.0	-	-	142.0	
203	108.0	162.5	184.0	106.0	144.5	-	-	142.0	
216	97.0	149.0	184.0	96.0	138.0	132.5	-	141.0	
229	-	136.0	170.0	85.0	131.0	122.5	-	140.0	
243	-	122.0	161.5	75.5	124.5	113.0	-	137.5	
256	-	109.0	147.5	69.0	118.0	104.5	-	132.0	
269	-	-	135.5	-	112.5	95.5	-	126.5	
282	-	-	123.5	-	-	87.0	55.4	123.0	
295	-	-	113.5	-	-	78.0	52.0	115.5	
308	-	-	104.5	-	-	-	47.7	106.0	
321	-	-	97.0	-	-	-	44.1	98.0	
334	-	-	89.5	-	-	-	40.7	90.5	
348	-	-	81.0	-	-	-	37.6	83.5	
361	-	-	76.0	-	-	-	-	77.0	