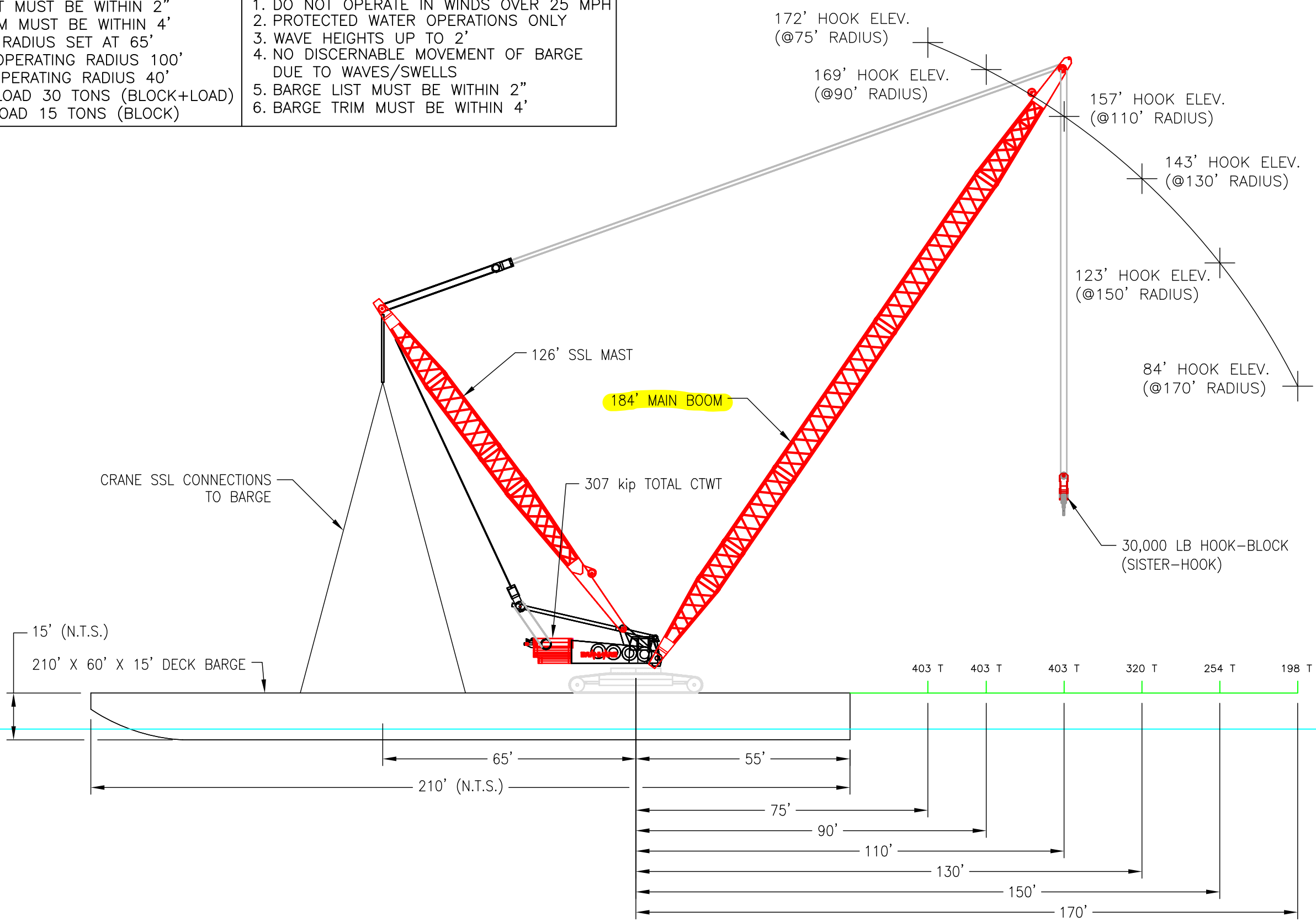


Lift Radius (ft)	Lift Capacity (tons)	
	18 PARTS OF LINE: BOOM HOIST REEVING	16 PARTS OF LINE: BOOM HOIST REEVING
40	403	403
45	403	403
50	403	403
55	403	403
60	403	403
65	403	403
70	403	403
75	403	403
80	403	403
85	403	403
90	403	403
100	403	403
110	403	361
120	359	321
130	320	286
140	285	255
150	254	227
160	225	201
170	198	175
180	168	149

- | 360° BARGE SERVICE RATING            | LIFT LIMITATIONS:                                       |
|--------------------------------------|---|
| 1. BARGE LIST MUST BE WITHIN 2"      | 1. DO NOT OPERATE IN WINDS OVER 25 MPH                  |
| 2. BARGE TRIM MUST BE WITHIN 4'      | 2. PROTECTED WATER OPERATIONS ONLY                      |
| 3. SSL MAST RADIUS SET AT 65'        | 3. WAVE HEIGHTS UP TO 2'                                |
| 4. MAXIMUM OPERATING RADIUS 100'     | 4. NO DISCERNABLE MOVEMENT OF BARGE DUE TO WAVES/SWELLS |
| 5. MINIMUM OPERATING RADIUS 40'      | 5. BARGE LIST MUST BE WITHIN 2"                         |
| 6. MAXIMUM LOAD 30 TONS (BLOCK+LOAD) | 6. BARGE TRIM MUST BE WITHIN 4'                         |
| 7. MINIMUM LOAD 15 TONS (BLOCK)      |   |



- GENERAL NOTES:
- SEE DWG 215635-G1.0 FOR CRANE CONFIGURATION DETAILS.
  - SEE DWG 215635-G4.0 FOR BALLAST CONDITIONS. LOAD CHART IS NOT VALID IF NOT BALLASTED PER DWG 215635-G4.0
  - HOOK ELEVATIONS ARE RELATIVE TO BARGE DECK ASSUMING ZERO TRIM CONDITION.

REV #	REVISIONS	DATE	REV. BY	CHK BY:
04	CAPACITIES UPDATED/PARTS OF LINE REQ.	08/30/10	SPB	JLY
05	REVISED CAPACITIES FOR BOOM HOIST REEVING	09/27/10	SPB	JLY

THIS DOCUMENT IS THE PROPERTY OF BARNHART CRANE AND RIGGING. THIS DOCUMENT SHALL NOT BE REPRODUCED, COPIED, DISCLOSED TO OTHERS, OR USED FOR ANY PURPOSE OTHER THAN THAT FOR WHICH IT WAS SPECIFICALLY FURNISHED WITHOUT THE PRIOR WRITTEN CONSENT OF BARNHART CRANE & RIGGING COMPANY.

**BARNHART**  
Minds Over Matter

SCALE: N.T.S.  
SIZE: 11 X 17  
DATE: 08/17/10

TITLE: BARNHART ENGINEERING	APPROVED BY: KDR
PROJECT: LR-1700 BARGE OPERATIONS	DWG NUMBER: 209327-C2.0
CUSTOMER: BCR-PORT OF MOBILE	REV NUMBER: 05
DRAWN BY: CGT	DESCRIPTION: LR1700 FIXED SWING BARGE LOAD CHART



**Minds Over Matter**

BARGE MOUNTED - LR 1700 CHART	
210'X68'X15' DECK BARGE	
277' MAIN BOOM - 126' SSL MAST	
RADIUS	KIPS (1,000 LB)
90	300
95	300
100	300
110	300
120	293
130	268
140	243
150	225
160	207
170	185
180	162
190	144
200	126
210	99
220	72
230	41
240	9

**BLOCK WEIGHT TO BE DEDUCTED FROM CHART VALUES**

**CRANE CENTER PIN IS 55' FROM BARGE STERN**

**PERMISSIBLE AVERAGE WIND SPEED: 15 MPH**

**PERMISSIBLE WIND LOAD ON PIECE: 4.5K**