



**BARNHART CRANE &
RIGGING COMPANY**

**Roll, Roll,
Roll Your Boat**

Page 2

**Emergency Transformer
Change Out**

Page 2

**Barnhart
Combines Multiple
Lifting Systems To
Set Turbine**

Page 3

**Tri-Block System
Makes Quick Work Of
Three Refinery Vessels**

Page 3

**Nitric Acid Plant
Dismantled And
Shipped To Canada**

Page 4

**BC&R Secures
Additional Storage
Contracts**

Page 4

**Barnhart's V.P.
Reaches Milestone**

Page 5

**LTM 1400 Replaces
Power Plant Pump
And Housing**

Page 5

**Emergency Change
Out At Arkansas Plant**

Page 5

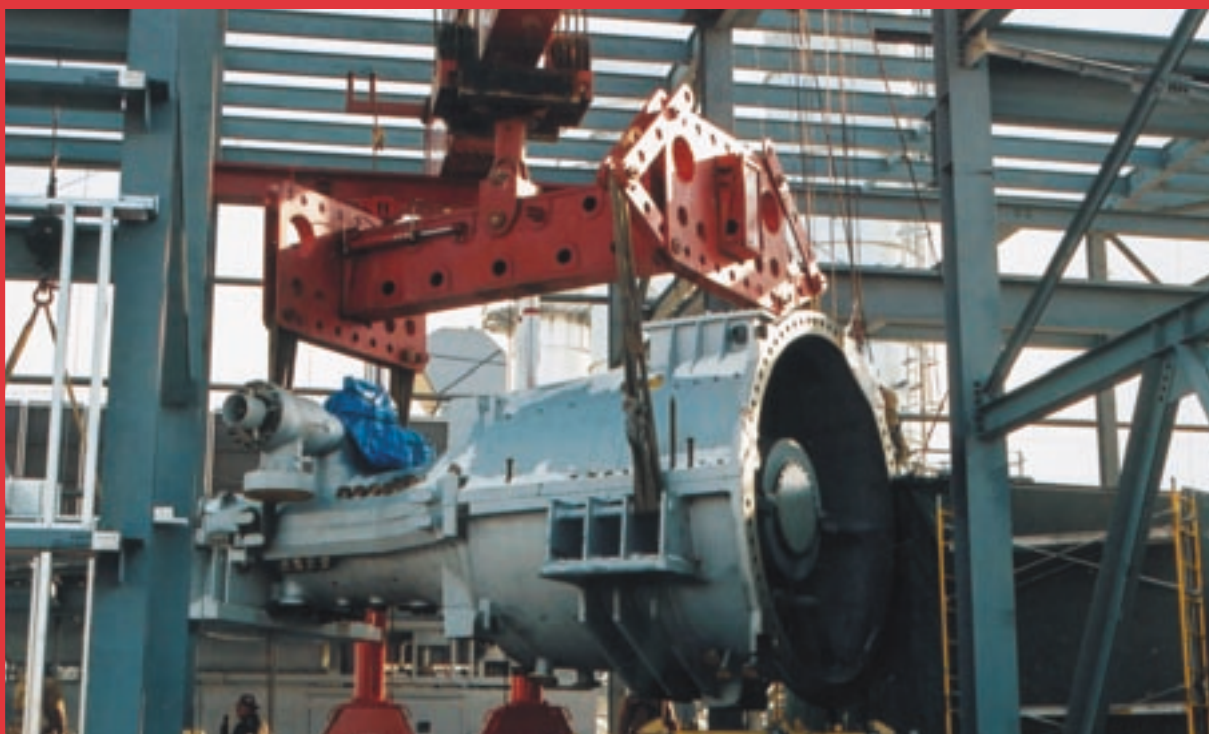
THE LIFTING LETTER

2 0 0 3 F I R S T E D I T I O N

A P U B L I C A T I O N O F B A R N H A R T C R A N E & R I G G I N G C O M P A N Y



**BARNHART COMBINES MULTIPLE
LIFTING SYSTEMS TO SET TURBINE** PAGE 3





ROLL, ROLL, ROLL YOUR BOAT

Over the years, Barnhart Crane and Rigging has lifted a variety of equipment from transformers to windmills, from nuclear reactors to church steeples and from planes to elephants. A recent job qualified as a little different: the company was hired to roll boat sections for a boat builder in Alabama. The three boat components to be rolled weighed up to 320 tons.

Two Demag crawler cranes, a CC2600 (600-ton crane) and a CC2000 (330-ton crane) were used to “bookend” each of the three boat sections. With simple rigging on each crane hook, the cranes lifted up one side then tracked and swung, like a door with the ground as the hinge.

Barnhart lifted each of the three sections in turn from their jig stands, rolled them over and set the pieces on their piers. The folsom deck was then hoisted and set in place on top of the hull components. Barnhart has rolled over a dozen boats in the last two years.



EMERGENCY TRANSFORMER CHANGE OUT

Barnhart was called on to provide turn key services to move an existing transformer from a power plant in Tennessee to a plant in Alabama, and fast. From the time Barnhart was told to proceed, in eight days the following occurred: a crew in Tennessee loaded the transformer to platform trailer, hauled it to the rail siding, loaded it on a special train, secured it on the rail car, obtained special train clearance, traveled the train to Alabama, off loaded, hauled to the power plant and set in place the transformer. A second crew had already moved the existing transformer out of the way at the Alabama facility to make room for the replacement transformer. All of this occurred with record low temperatures and snow in Tennessee. Due to extensive coordination with the railroad, the customer, two separate power plants and multiple Barnhart crews from different branches this fast paced project occurred safely and in record time.

SYSTEMS TO SET TURBINE



In February of this year, Barnhart Crane & Rigging set a turbine at a Nebraska power plant using a combination of various Barnhart lifting systems. The systems included the 800 Ton Gantry System, the 200 Ton Hoist System, an 18' Multi-Purpose Spreader Bar, the VLD Links and a 100' run of 5' deep girders. The turbine and shipping frame weighed 280,000 lbs. and was set outside the turbine building using Barnhart's Demag CC1200. The Barnhart hoist system lifted the turbine out of the shipping frame and traveled approximately 55' to set the turbine on the foundation 9' above grade. This custom built lifting system utilized multiple lifting devices to provide a safe and cost effective lift for our customer that lasted approximately 2 hours in duration.



TRI-BLOCK SYSTEM MAKES QUICK WORK OF THREE REFINERY VESSELS

This winter, Barnhart's Tri-Block was utilized on our Demag TC3000 (800 ton class crane) at an Illinois refinery to rotate three horizontal vessels to their proper orientation. The heaviest vessel was a high pressure separator weighing 110 tons, and was set at a 100' radius. The vessels were transported with their extruding boots in the 3:00 position due to height restrictions. The Tri-Block system requires only one crane with 2 load lines to rotate vessels. This specialized rigging system enabled the crew to save a significant amount of time in setting these vessels. Additionally, the equipment set up area was reduced due to utilizing one crane, and the customer saved the expense of a second crane.



NITRIC ACID PLANT DISMANTLED AND SHIPPED TO CANADA

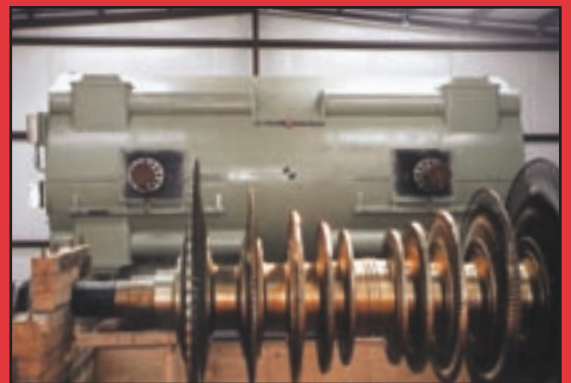


Last fall, Barnhart was awarded a contract to dismantle and transport to Canada a 180 ton per day nitric acid plant at the Volunteer Army Ammunitions Plant in Chattanooga, TN. The work scope included match marking, dismantling, crating, loading and transporting the equipment. Pictured is a 225 ton Liebherr with a 40 ton rigger forklift laying down a 50 ton acid distillation column on to a 13 axle transport truck for movement to Canada.



BC&R SECURES ADDITIONAL STORAGE CONTRACTS

Barnhart was recently awarded new contracts to store heavy power plant equipment at the Memphis terminal. The equipment for each customer was originally ordered for new construction projects that have been deferred due to the slow economy in the power sector. The heavy equipment consists of turbines and generators along with hundreds of truckloads of accessory components. The heavy cargo will be stored at one of Barnhart's indoor storage facilities many of which were constructed in the past six months. To accommodate the increase in heavy storage demands by our customers, an additional indoor storage facility is planned for construction later this year. These new storage facilities are located at the Heavy Lift Terminal on the Mississippi River in Memphis, TN adjacent to Barnhart's 1250 ton derrick crane, Ichabod. The Heavy Lift Terminal features barge, rail and truck access enhancing both the handling and storing of heavy equipment.





BARNHART'S VICE PRESIDENT REACHES MILESTONE

Barnhart Crane & Rigging's Vice President of Crane Operations at the Memphis Branch, Charles "Dub" Norris, completed his 25th year with the company. Dub has watched the company grow from a small steel erector in Memphis to one of the world's largest crane and rigging companies with offices in thirteen locations throughout the U.S. Mr. Norris serves as the manager for the crane operators in the Memphis Branch. His duties include training and evaluating the operators. Dub also serves as the crane consultant on many of Barnhart's more complex lifts, and when needed will jump in a crane and make a lift for a customer. Dub, thank you for 25 years of hard work and tireless service to Barnhart.

LTM 1400 REPLACES POWER PLANT PUMP & HOUSING

Recently, a power plant customer needed to remove and replace one of their large Worthington circulating water pumps on the Mississippi River. Down time for a power plant is very costly. Therefore, once the new pump arrived on site, Barnhart provided a 500 ton Liebherr, LTM 1400, hydraulic crane working around the clock with the plant personnel to execute the pump change out. The crane safely handled 50,000 lbs. at a 98' radius.



EMERGENCY CHANGE OUT AT ARKANSAS POWER PLANT

Last month, Barnhart was called on by an Arkansas power plant to load out at one power plant, transport to a second plant and set a LCI building in quick order. Barnhart crews battled bad weather to safely change out the LCI building with one of their LTM1400s, 500 ton hydraulic crane immediately after receiving the call.

TELESCOPIC BOOM CRANES

| | MODEL NO. | BOOM |
|------------------------------------|-----------|------|
| 500 Ton Liebherr All-Terrain (2) | LTM 1400 | 440' |
| 440 Ton Demag Truck Crane (2) | HC 1010 | 348' |
| 300 Ton Demag All-Terrain | AC 665 | 389' |
| 225 Ton Liebherr All-Terrain | LTM 1160 | 364' |
| 210 Ton Krupp All-Terrain (2) | GMK 5210 | 322' |
| 180 Ton Demag All-Terrain (3) | AC 435 | 262' |
| 165 Ton Demag All-Terrain (3) | AC 335 | 302' |
| 150 Ton Demag All-Terrain (2) | AC 395 | 253' |
| 150 Ton Krupp All-Terrain (2) | KMK 5100 | 227' |
| 120 Ton Demag All-Terrain | AC 265 | 204' |
| 110 Ton Liebherr (3) | LTM 1090 | 243' |
| 110 Ton Krupp All-Terrain | KMK 5110 | 214' |
| 100 Ton Demag All-Terrain (4) | AC 205 | 219' |
| 80 Ton Krupp All-Terrain (4) | KMK 4070 | 175' |
| 80 Ton Grove RT (2) | RT 990 | 206' |
| 70 - 60 Ton Truck Crane (5) | | 186' |
| 50 - 30 Ton Grove Truck Crane (14) | | 142' |
| 22 Ton Grove All-Terrain/Truck (4) | | 113' |
| 27 - 12 Ton Boom Truck (6) | | 149' |
| 17.5 - 8 Ton Cary Deck (7) | | 37' |

CRAWLER/RINGER CRANES

| | MODEL NO. | BOOM |
|---|-----------|------|
| 1800 Ton Demag with Ringlift | CC 4000 | 595' |
| 880 Ton Demag Crawler with Superlift | CC 4000 | 550' |
| 600 Ton Demag Crawler with Superlift | CC 2600 | 295' |
| 500 Ton Demag Crawler | CC 2600 | 295' |
| 440 Ton Demag Crawler with Superlift | CC 2000 | 435' |
| 386 Ton Demag Crawler with Superlift | CC 1200 | 433' |
| 360 Ton Link-Belt Heavy Lift | LS 718 HL | 480' |
| 330 Ton Demag Crawler | CC 2000 | 433' |
| 275 Ton Demag Crawler | CC 1200 | 433' |
| 250 Ton Link-Belt Crawler Tower Crane (2) | LS 718 | 550' |
| 250 Ton Link-Belt Crawler Crane (2) | LS 718 | 450' |

LATTICE BOOM TRUCK CRANES

| | MODEL NO. | BOOM |
|--|------------|------|
| 800 Ton Demag Truck Crane with Superlift | TC 3000SL | 496' |
| 550 Ton Demag Truck Crane | TC 3000 | 496' |
| 440 Ton Demag Truck Crane with Superlift | TC 1200 SL | 472' |
| 308 Ton Demag Truck Crane | TC 1200 | 472' |
| 200 Ton Link-Belt Truck Crane | HC 258 | 370' |
| 125 Ton Link-Belt Truck Crane (2) | HC 238 | 300' |

HEAVY LIFTING, MOVING & SLIDING

| | |
|--|--------------------------|
| 500 Ton Hydraulic Gantries (20) | Lift Towers to 1200 Tons |
| 1000 Ton Sliding Systems (8) | 2400 Ton Jacking System |
| Forklifts to 120,000 lbs. with hydraulic booms | Air Casters to 500 Tons |
| 1800 Ton Strand Lift | |

MARINE SERVICES

Memphis, TN - Heavy Lift Terminal with 1250 Ton Derrick Crane, Rail Service, Heavy Storage
 Mobile, AL - Heavy Cargo discharge and storage, RO-RO, Barge/Rail Loading Heavy Lift Services
 Decatur, AL - Barge Dock, Cranes to 500 Tons, RO-RO
 Pascagoula, MS - Heavy Cargo discharge and storage, Barge/Rail Loading, Heavy Lift Services

TRANSPORTATION SERVICES

Over 2000 Tons of Hydraulic Platform Trailer Capacity including SPMT
 Barge and Rail Loading and Securement
 Dolly Transporters to 1000 Tons
 48 State Heavy Haul, Stretch Trailers, Tank Trailer to 16' diameter
 Temporary Bridges to 152'
 Jumper Ramps 30'-152'

INTERNATIONAL SERVICES

The following can be shipped in standard containers:
 Lift Towers, Dolly Transporters, Gantries, Goldhofer Trailers, Sliding Systems,
 Barge Ramps, Temporary Bridges, Strand -Lift Systems

STORAGE CAPABILITIES

500,000 Square Feet of Indoor Warehousing
 Over 100 Acres of Outdoor Storage



1701 Dunn Ave • Memphis, TN 38106 • 901-775-3000 • 800-727-0149 • fax 901-775-2992
 731 Finley Island Road • Decatur, AL 35601 • 256-355-5531 • 800-830-4260 • fax 256-355-2091
 8216 Arch Street Pike • Little Rock, AR 72206 • 501-570-0700 • 800-543-2318 • fax 501-570-0304
 246 N. Pearson Road • Pearl, MS 39208 • 601-664-3005 • 800-394-8652 • fax 601-664-3077
 5700 Ironworks • Theodore, AL 36582 • 251-654-0541 • 800-587-3249 • fax 251-654-0547
 10529 Lexington Drive • Knoxville, TN 37932 • 865-966-9786 • fax 865-966-9705
 938 E 4th Street • Richmond, VA 23224 • 804-233-9221 • fax 804-232-9141
 190 Smith Street • West Monroe, LA 71292 • 318-322-LIFT (5438) • fax 318-388-3808
 1202 Columbus Street, PMB 221 • Ottawa, IL 61350-2107 • 815-431-0078 • fax 815-431-0776
 6429 Harney Road • Tampa, FL 33680 • 813-383-5106 • fax 813-626-0336
 web page: www.barnhartcrane.com • e-mail: sales@barnhartcrane.com

PRSRT STD
 US POSTAGE
 PAID
 MEMPHIS, TN
 PERMIT 465